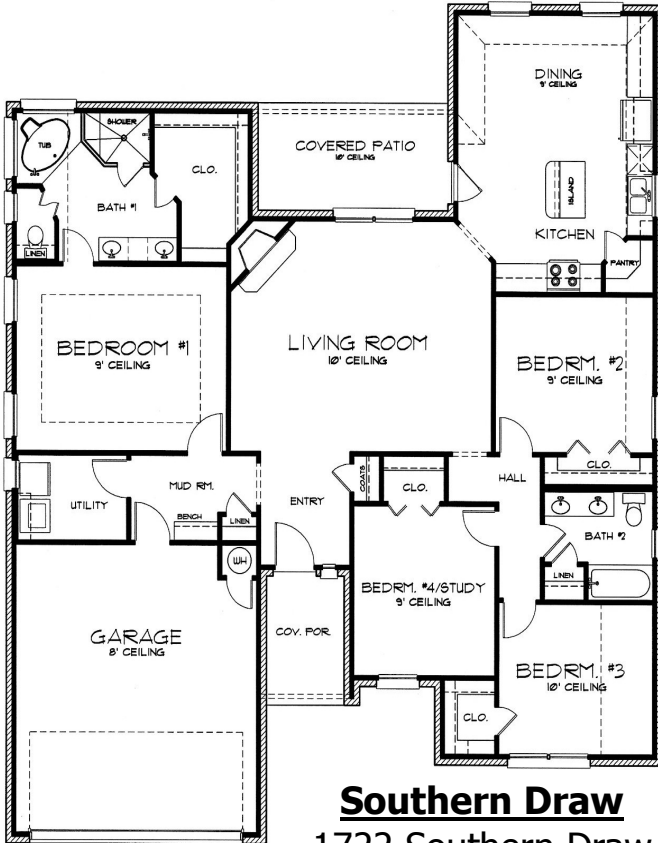




Home Features

- 4 Bedroom/2 Bath
- Large Covered Patio
- All Brick/ Stone
- Energy Star Certified
- Large Utility
- Mud Room With Bench
- Large Living Room
- Tile/Carpet Flooring
- Privacy Fenced Yard
- Surround Sound Pre-Wired
- Marble Jacuzzi Tub
- Fireplace/Wood Mantle
- Sprinkler System
- Granite Countertops



Southern Draw
 1722 Southern Draw
 \$199,000

Bruce Burgess
 New Home Sales
(254) 217-2009

Email: BruceBurgess@Live.com

Living Area:	1928 Sq. Ft.
Garage:	417 Sq. Ft.
Porches:	167 Sq. Ft.
TOTAL:	2512 Sq. Ft.

All square footage approximate and may change with different elevations.
 All Prices Subject to change without notice.

*"We don't just build a house....
 We build a home."* Brad Dusek- President

EDC HOMES
 1113 S. 33rd St.
 Temple, Texas 76504

www.edchomes.com