

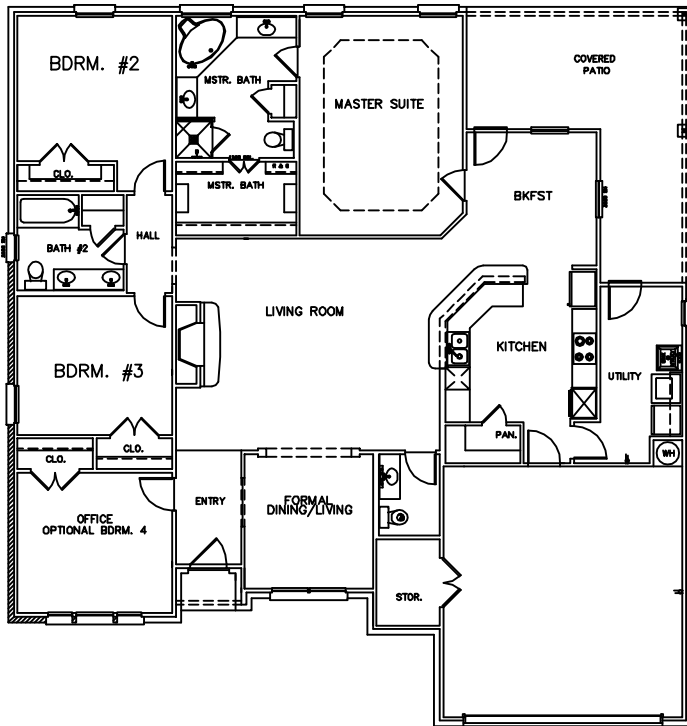


# EDC HOMES

**1517 RUSTY NAIL DR.  
SOUTHERN DRAW**

**\$225,000**

## *Home Features*



4 Bedroom/ 2.5 Bath

2191 Sq/Ft Living

All Brick/ Stone

Energy Star Certified

Large Utility

Wall Oven and Seperate Cook-Top

Large Living Room

Tile/Carpet Flooring

Formal Dining

Surround Sound Pre-Wired

Marble Jacuzzi Tub

Fireplace/Wood Mantle

Sprinkler System

Granite Countertops

**(254) 541-0216**

**www.edchomes.com**

LIVING:	2,191 SQFT
GARAGE:	488 SQFT
PORCHES:	293 SQFT
<b>TOTAL:</b>	<b>2972 SQFT</b>

All square footage aproximate and may change with different elevations.  
All Prices Subject to change without notice.

"We dont just build a house....  
We build a home." Brad Dusek- President

**EDC HOMES**

113 N. 21st.  
TEMPLE, Texas, 76501

**www.edchomes.com**